



# PRESSING THE LEVERS OF CHANGE

## Hawai'i State Framework to Address Homelessness

The State’s framework to address homelessness is based upon the ‘Ohana Nui approach, the Department of Human Services and the Department of Health’s multigenerational approach that invests early and concurrently in children and families to improve health, education, employment, and other outcomes. ‘Ohana Nui is integrated into State programs, policies, and philosophies to ensure we address the root causes, or *social determinants of health*, which include healthcare, education, safety, living/work environments, and housing. Concurrently and in alignment with ‘Ohana Nui, the State strategically presses on three levers to address homelessness: **Affordable Housing, Health & Human Services, and Public Safety.**

### Affordable Housing

Build more permanent housing and maximize the use of rental subsidies and vouchers to better utilize existing inventory.

### Health & Human Services

Implement data-driven and evidence-based services that emphasize permanent housing placement.

### Public Safety

Maintain safety in public spaces for all members of the community. When unsheltered persons are encountered, ensure they are quickly connected to housing and human services.

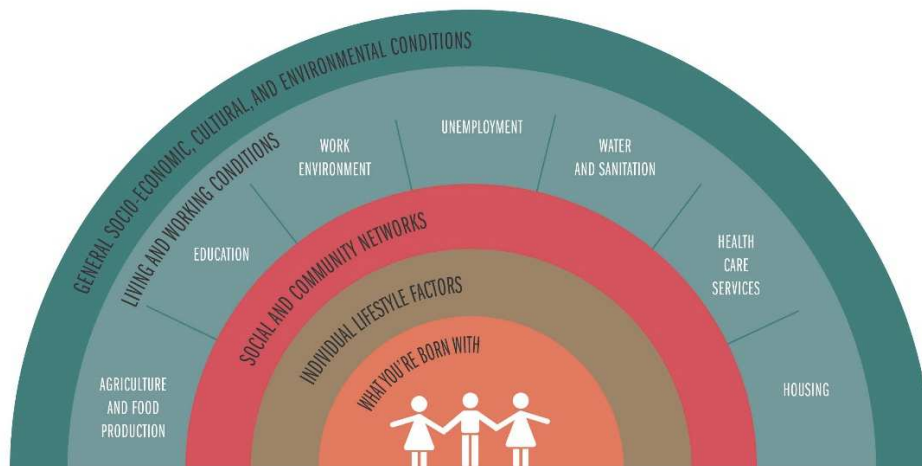
### GOAL: A “HOUSING FIRST” SYSTEM BY 2020

To implement **Housing First** on a system-wide scale, Hawai'i aims to reach **Functional Zero**, which is defined as a point where Hawai'i has:

- Sufficient housing for all homeless individuals; and
- Appropriate services to transition individuals to permanent housing, regardless of their levels of need.

### ‘OHANA NUI: ADDRESSING THE SOCIAL DETERMINANTS OF HEALTH

Implementing a Housing First system – so that children do not grow up in homelessness – addresses the social determinants of health and improves outcomes not only for the current generation, but for those to come. The greatest return on investment will be in children ages zero to five years because research shows that living in toxic stress situations impact early childhood brain development, and health throughout the lifespan.



## \$12M LEGISLATIVE APPROPRIATION: ACCELERATING STATE IMPACT ON HOMELESSNESS

The State Legislature provided an appropriation of \$12M over the existing base budget to address homelessness statewide. The framework will guide the State’s allocation of this funding as illustrated below:



### Data & Infrastructure (\$675K)

- Build data capacity for evaluation and outcome monitoring.
- Invest in repair and maintenance for state-owned shelters.



### Affordable Housing

- Governor Ige is committed to a goal of 10,000 new housing units by 2020.
- The Rent Supplement program provides shallow subsidies for homeless households.
- Landlord summits have been convened statewide to incentivize use of existing inventory.



### Health & Human Services (\$9.40M)

- Increase funding for homeless outreach.
- Expand Housing First and Rapid Re-Housing programs statewide.
- Continue to invest in evidence-based practices.



### Public Safety (\$1.925M)

- Provide funding to address encampments on State lands and to keep public spaces safe.
- Ensure property storage and access to housing services for unsheltered persons.

## MEASURING IMPACT: CLEAR AND MEASURABLE OBJECTIVES FOR EACH LEVER OF CHANGE

	Affordable Housing	Health & Human Services	Public Safety
Short term (Now)	Maximize the use of rental subsidies by convening landlord summits in every county and recruiting landlord participation.	Issue a new RFP for state homeless contracts, which are coordinated, performance-based, and focused on permanent housing.	Implement statewide policy to address homeless encampments on state lands.
Medium term (2018)	Streamline housing development by aligning rules and processes among state housing agencies.	Maximize efficiency by utilizing Medicaid and other funding streams for permanent supportive housing.	Divert homeless persons from the criminal justice system.
Long term (2020)	Build 10,000 new housing units by 2020.	Reduce the number of unsheltered people to functional zero by 2020.	Reduce to functional zero the number of encampments on state lands by 2020.

The full state plan aligns with Governor Ige’s vision for Hawai’i and builds on the work done by many individuals from government, nonprofit organizations, and the private sector. By incorporating ‘Ohana Nui into the framework, the plan addresses Governor Ige’s priorities: investing in families; improving government efficiencies; ensuring that the community comes first; and bringing aloha to everything we do. To learn more, contact the Governor’s Office on Homelessness at **(808) 586-0193** or by e-mail at [gov.homelessness@hawaii.gov](mailto:gov.homelessness@hawaii.gov).