

36.

King Kamehameha the Great was the first ruler of Hawai'i. He conquered and united the eight major Hawaiian Islands in 1810. He ruled the kingdom until his death in 1819. A lifelike statue of King Kamehameha I stands prominently in the historic Capitol District of downtown Honolulu.



Mauna Kea is the tallest peak in the world and is a dormant volcano on the Big Island of Hawai'i.



44.

45.

Sea cliffs on the northern coast of East Moloka'i are the highest on Earth, rising 3,315 feet above the ocean.



47.

Mount Wai'ale'ale on Kaua'i is the wettest place in the world.



46.

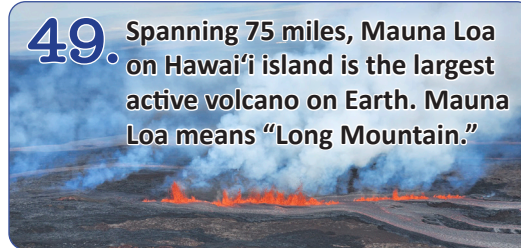
Hawai'i Pono'i is the official state anthem. The words were written by King David Kalākaua as Hawai'i's national anthem in 1874.



48.

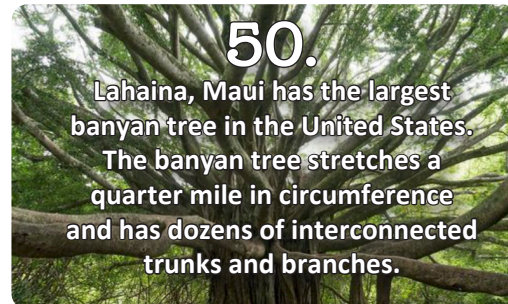
Hawai'i consumes more Spam per capita than any other state, with five cans eaten per person per year—about 7 million cans total.

49. Spanning 75 miles, Mauna Loa on Hawai'i island is the largest active volcano on Earth. Mauna Loa means "Long Mountain."



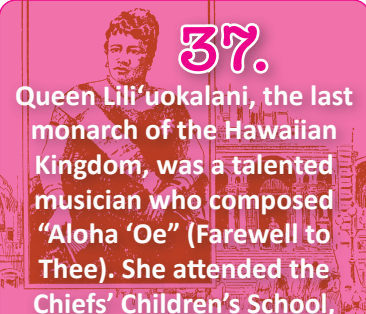
50.

Lahaina, Maui has the largest banyan tree in the United States. The banyan tree stretches a quarter mile in circumference and has dozens of interconnected trunks and branches.



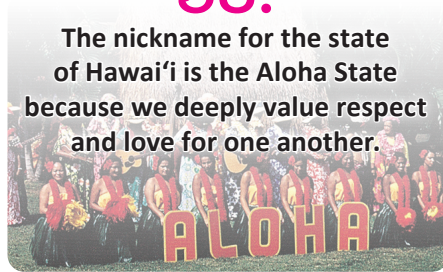
37.

Queen Lili'uokalani, the last monarch of the Hawaiian Kingdom, was a talented musician who composed "Aloha 'Oe" (Farewell to Thee). She attended the Chiefs' Children's School, which is now Royal Elementary School in Honolulu.

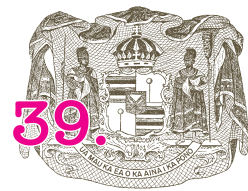


38.

The nickname for the state of Hawai'i is the Aloha State because we deeply value respect and love for one another.



39.



Hawai'i's state motto is in Native Hawaiian – "Ua mau ke ea o ka 'āina i ka pono," which translates to "The life of the land is perpetuated in righteousness."

41.

The closest landmass to Hawai'i is the Mainland U.S. This makes it the most isolated population center on Earth.



43.



Kānaka Maoli are people with Hawaiian blood. Others born in Hawai'i without Hawaiian blood are called "Kama'āina" (meaning child of the land).

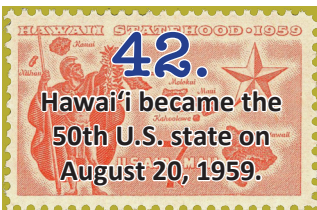
40.



The State flag features the British flag in the corner and eight stripes which represent the eight islands. The use of the Union Jack in the flag design is symbolic of the friendship between Britain and the Hawaiian Kingdom.

42.

Hawai'i became the 50th U.S. state on August 20, 1959.



### Common Hawaiian Words:

Aloha – Hello or Goodbye

Mahalo – Thank you

Kama'āina – Longtime resident of Hawai'i

A hui hou – Until we meet again

Kāne – Man

Wahine – Woman

Keiki – Child or Children

Kupuna – Grandparent or Elder

'Ono – Delicious

Kōkua – To help

Makai – Oceanside

Mauka – Mountainside

'Ohana – Family

Pau – Finished

Pūpū – Snacks or appetizers

Pau Hana – Time after work

'Āina – The land

Kai – The sea



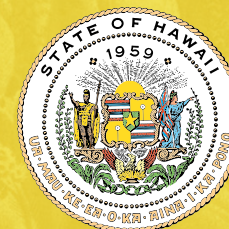
### Office of the Governor

808 586-0034

@govhawaii

[governor.hawaii.gov](http://governor.hawaii.gov)

@GovernorHawaii



# 50 FUN FACTS about the 50th State







**1.** On December 5, 2022, Josh Green, M.D. became the ninth governor of the State of Hawai'i.

**2.**

The state of Hawai'i is made up of 132 islands (124 islets, shoals, and reefs), but there are eight main islands: O'ahu (The Gathering Place) Kaua'i (The Garden Isle) Maui (The Valley Isle) Hawai'i (The Big Island) Kaho'olawe Lāna'i (The Pineapple Isle) Moloka'i (The Friendly Isle) Ni'ihau (The Forbidden Isle)



**3.**

Hawai'i has national monuments bigger than all of the United States national parks combined.



The 'Iolani Palace is the only official full-time royal residence in the United States.

**4.**

**5.** The Papahānaumokuākea Marine National Monument is a UNESCO World Heritage Site comprising a cluster of atolls and islands that is larger than the area of all national parks in the U.S. combined. It extends across more than 583,000 square miles.



**6.**

Hawai'i has 10 of the world's 14 climate zones.

**7.**

Surrounded by the Pacific Ocean, Hawai'i is the most isolated population center on Earth. Hawai'i is 2,390 miles from California and 3,850 miles from Japan.

**9.**

Hawai'i has its own time zone: Hawai'i-Aleutian Standard Time (HST).



**11.**

The Hawaiian Islands were formed through volcanic explosions.



**12.**



On the Island of Kaua'i, no buildings may be taller than around four stories, a.k.a., the height of a palm tree.

**13.**

The islands of Moloka'i and Lāna'i have no stoplights and only a few stop signs.



**15.**

Hawai'i is the only U.S. state that has two official state languages: English and Hawaiian.

**16.**

There are only 13 letters in the Hawaiian alphabet (Vowels: A, E, I, O, U, Consonants: H, K, L, M, N, P, W, and '). The 'okina (a reversed apostrophe) and the kahakō (macron above a vowel) are used to clarify pronunciation and meaning.

**8.**



Hawai'i does not observe daylight savings.

**17.**

Hawai'i was the first state to impose a ban on plastic bags.



**18.**

Billboards are illegal in Hawai'i.



**27.**

You can mail a coconut from here to anywhere in the world. It just needs postage and an address.



**28.**

Hawai'i was for generations, the only U.S. state to grow coffee commercially. It is presently the only state where cacao for chocolate is commercially grown.

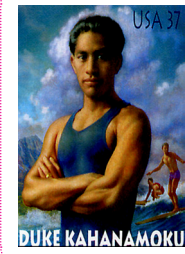


**30.**

Only 2% of the world's pineapples are from Hawai'i. "Hawaiian Pizza" using the non-native fruit, was invented in Canada.

**31.**

Duke Kahanamoku, Hawai'i's native son, was a legendary surfer; Hawai'i's first Olympic medalist; rescued eight drowning men; a Honolulu sheriff and the 50th State's official greeter.



**22.**

Macadamia nuts aren't actually from Hawai'i; they originate from Australia.



**23.**

Hawai'i is the most expensive state in which to buy a house, with a median price of \$852,000 as of June 2023. The housing crisis is a top priority for Governor Josh Green, whose administration is actively working to alleviate the shortage.



**24.**

Hula was originally performed only by men. Hula kahiko was a religious dance where only highly trained men could perform it. In ancient Hawai'i, it was said that they learned hula from the Hawaiian goddess, Laka.



**32.**

Hawai'i's traditional surfboards were massive, measuring up to 20 ft (6 m) and weighing up to 200 lbs (90 kg). These were used until the 1930s.



**33.**

Hawai'i is a popular filming location. Popular works filmed in Hawai'i include: Jurassic Park; Jurassic World; Blue Hawai'i; Fantasy Island; Outbreak; intro to Gilligan's Island; Lost; Jumanji; Indiana Jones: Raiders of the Lost Ark; 50 First Dates; The Hunger Games: Catching Fire; Pirates of the Caribbean and Forgetting Sarah Marshall.

**35.**

Queen Lili'uokalani took the throne in 1891, becoming the first queen of the Kingdom of Hawai'i. She was its final ruler.



**34.**

Hawai'i's state sports are canoe paddling and surfing.



**26.**

Hawai'i is called the melting pot because of our wide-ranging ethnic and cultural diversity.



A woman wearing a flower above the left ear means that she is taken, while a flower on the right ear is a sign that she is single and available.